

## Full-HD (1920 x 1080) Wide Dynamic Cameras from Sony Vision with Precision – HD Security

Sony is pleased to introduce its first full-HD (1920 x 1080) network HD cameras, the SNC-CH240 and SNC-DH240. These dual-stream network full-HD cameras, supporting H.264, MPEG-4, and JPEG compression formats, deliver excellent picture quality in 1080p HD resolution at 30 frames per second (fps).

Incorporating the new Exmor™ CMOS image sensor from Sony, which is specially designed for surveillance applications, these cameras feature state-of-the-art image-enhancement technology, such as View-DR which demonstrates an extremely wide dynamic range.

As a result, these cameras not only provide high-quality full-HD images but additionally deliver excellent sensitivity and visibility even in challenging lighting environments.

The SNC-CH240 Fixed Network Camera and SNC-DH240 Mini Dome Network Camera are ideal for the most demanding surveillance applications, especially airport and city surveillance.



SNC-DH240



SNC-CH240

**HD**

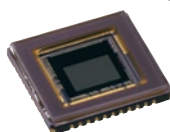
## Network HD Cameras

SNC-CH240  
SNC-DH240

Preliminary

### FEATURES

- Full-HD 1080p resolution for advanced picture quality, supporting H.264 at 30 fps **HD**
- Three codecs (H.264, MPEG-4, JPEG) and dual streaming capability
- The new Exmor CMOS sensor realizes high image quality and low noise for surveillance  
**Exmor™**
- Images with very high visibility with View-DR technology - the combination of Sony's cutting-edge technologies: (Images 1)
  - ▶ Full-capture Wide-D technology - all of the electrons converted from the captured light are fully used
  - ▶ High-speed Exmor CMOS sensor
  - ▶ Visibility enhancer technology **View-DR**
- XDNR (eXcellent Dynamic Noise Reduction) technology for clear images without motion blur under low illumination (Images 2)
- Easy Focus function/Easy Zoom function\*1
- DEPA™ Advanced Intelligent Video and Audio Analytics trigger an alarm, based on user-defined rules
  - ▶ Intelligent Motion Detection with virtual borderline function
  - ▶ Tamper Alarm
  - ▶ Advanced Audio Detection
- Power over Ethernet (PoE) capability
- CompactFlash® slot for on-board recording/wireless capability – allows streaming of locally stored data using RTP/RTCP protocols for backup purposes and post-recording reviews, and supports 802.11g wireless capability with optional SNCA-CFW5\*2 as well.
- ONVIF™ Software (Open Network Video Interface Forum) **ONVIF**



\*1 The Easy Zoom function is available with the SNC-DH240 only.  
\*2 Available with the SNC-CH240 only.

### Drastic Improvement in Visibility

**View-DR** (Visibility enhanced wide Dynamic Range)  
(Images 1)

**View-DR**

OFF



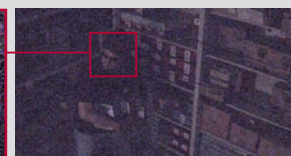
ON



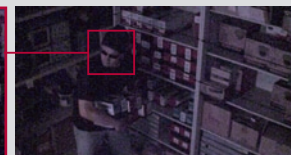
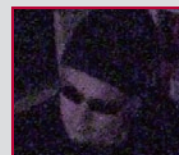
Simulated Images

**XDNR** (eXcellent Dynamic Noise Reduction)  
(Images 2)

OFF



ON



Actual Images

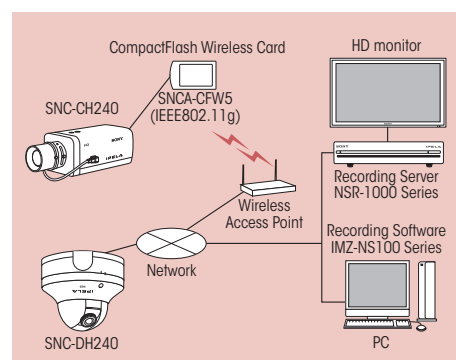
## SPECIFICATIONS

	SNC-CH240	SNC-DH240
Camera		
Image device	1/2.8 type progressive scan Exmor CMOS sensor	
Minimum illumination	TBD	
Number of effective pixels (H x V)	Approx. 3.27 Megapixel (2096 x 1561) (Tentative)	
Electronic shutter speed	1s to 1/10000s	
Auto gain control	Max gain setting LOW, MID, HIGH	
Exposure control	Auto, EV Compensation *1, Auto Slow Shutter *2	
White balance mode	Auto (ATW, ATW-PRO), Preset, One-push WB, Manual	
Lens type	CS Mount Vari-focal lens	Vari-focal lens
Zoom ratio	TBD	
Horizontal viewing angle	101.2 to 47.0 degrees	88.5 to 32.3 degrees
Focal length	f=2.8 to 6.0 mm	f=3.1 to 8.9 mm
F-number	F1.3 (Wide), F1.9 (Tele)	F1.2 (Wide), F2.1 (Tele)
Minimum objects distance	300 mm	
Powered Focus	Yes (Easy Focus)	
Powered Zoom	No	Yes (Easy Zoom)
Camera Features		
Day/Night *3	Yes	
Wide-D	View-DR	
Image enhancement	Visibility Enhancer	
Noise reduction	XDNR	
Image		
Codec image size (H x V)	1920 x 1440, 1600 x 1200, 1680 x 1056, 1920 x 1088 (Tentative), 1440 x 912, 1376 x 768, 1280 x 960, 1280 x 800, 1280 x 720, 1280 x 1024, 1024 x 768, 1024 x 576, 800 x 480, 768 x 576, 640 x 480, 640 x 368, 384 x 288, 320 x 240, 320 x 192 (H.264, MPEG-4, JPEG)	
Video compression format	H.264, MPEG-4, JPEG	
Codec streaming capability	Dual streaming	
Maximum frame rate	H264: 30fps (1920 x 1080) (Tentative) MPEG-4: 23 fps (1920 x 1080) (Tentative) JPEG: 30fps (1920 x 1080) (Tentative)	
Audio		
Audio compression	G.711/G.726	
Scene Analytics		
Intelligent motion detection	Yes (with built-in Video Motion Filter)	
Intelligent object detection	No	
Rule filter	Yes	
Advanced audio detection	Yes	
Network		
Protocols	IPv4, IPv6, TCP, UDP, ARP, ICMP, IGMP, HTTP, HTTPS, FTP (client/server), SMTP, DHCP, DNS, NTP, RTP/RTCP, RTSP, SNMP (MIB-2)	
ONVIF conformance	Yes	
Wireless network	Yes (with optional *4)	No
Number of clients	10	
Authentication	IEEE802.1X	
Analog Video Output		
Signal system	NTSC / PAL	
Horizontal resolution	TBD	
S/N ratio	More than 50 dB	
Interface		
Ethernet	10BASE-T / 100BASE-TX (RJ-45)	
Serial interface	No	
Card slots	CompactFlash card x1	No
Analog video output	BNC x 1	BNC x 1, RCA x 1
Sensor input	x 1	
Alarm output	x 2	
External microphone input	Mini-jack (Monaural), MIC IN/LINE IN: 2.47VDC plug-in power	
Audio line output	Mini-jack (Monaural), Max output level: 1 Vrms	
General		
Weight	1 lb 6 oz (630g) (Tentative)	1 lb 10 oz (750g) (Tentative)
Dimensions (ø x H)	TBD	
Power requirements	PoE, AC24V, DC12V	
Power consumption	TBD	
Operating temperature *5	14 to 122 °F (-10 to +50 °C) (Tentative)	
Storage temperature	-4 to 140 °F (-20 to +60 °C)	
System Requirements		
Operating system	Windows XP™, Windows Vista™	
Processor	Intel Core2™ Duo 2GHz or higher	
Memory	1GB or more	
Web browser	Microsoft Internet Explorer® Ver6.0 or 7.0	

\*1 VE off mode only. \*2 View-DR off mode only. \*3 Removable IR Cut Filter. \*4 With optional SNCA-CFW5. \*5 Cold start must be greater than -20 degree.

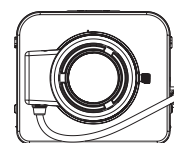
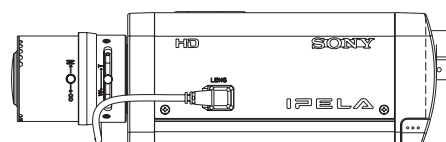
\* The SNC-CH240 and SNC-DH240 include software developed by the OpenSSL Project for use in the OpenSSL Toolkit (<http://www.openssl.org/>).

## SYSTEM CONFIGURATIONS

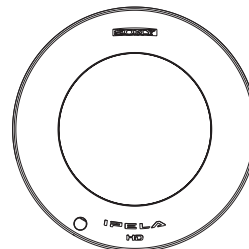
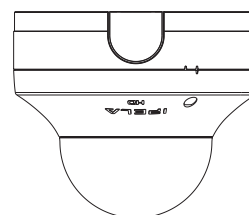


## DIAGRAM

### SNC-CH240



### SNC-DH240



**SONY**

Sony Electronics Inc.  
1 Sony Drive  
Park Ridge, NJ 07656  
click: [sony.com/security](http://sony.com/security)

S-IP2055 (MK10654V1)

© 2010 Sony Electronics Inc. All rights reserved.  
Reproduction in whole or in part without written permission is prohibited.  
Features and specifications are subject to change without notice.  
Non-metric weights and measurements are approximate.  
Sony, make.believe, the Sony and make.believe logos, DEPA, IPELA and Exmor are trademarks of Sony.  
Windows, XP, Internet Explorer, and Vista are trademarks of Microsoft Corporation.

Printed in USA (1/10)